

048455

RECEIVED
LARAMIE COUNTY
CHEYENNE, WY.

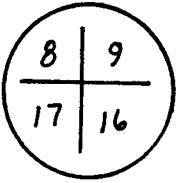
CERTIFIED LAND CORNER RECORDATION

'88 SEP 6 AM 10 27

DESCRIPTION OF CORNER EVIDENCE FOUND, AND ORIGINAL RECORD (if known)

T 13 N

R
66
W



Found 2" Aluminum Cup at center of Road inter-section marked as indicated to the left.

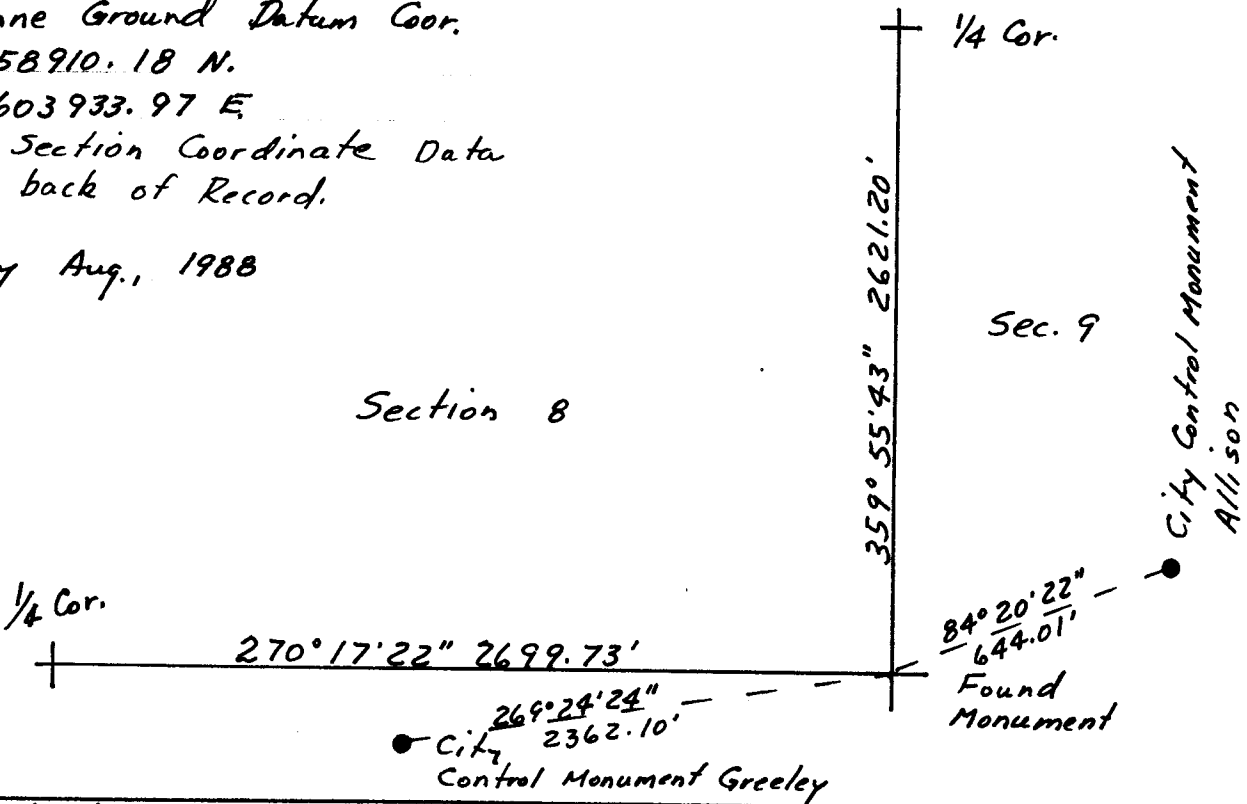
DESCRIPTION OF MONUMENT AND ACCESSORIES ESTABLISHED TO PERPETUATE THE ORIGINAL LOCATION OF THIS CORNER:

SKETCH, WITH COURSE AND DISTANCE TO ADJACENT CORNER IF DETERMINED IN THIS SURVEY. (May Sketch or Paste Reproduction on Reverse Side.)

Cheyenne Ground Datum Cor.
58910.18 N.
603933.97 E
See Section Coordinate Data on back of Record.

Field Survey Aug., 1988

Section 8



I, Edward C. Fry certify that I have carefully performed or reviewed the work done on the diagrammed corner as reported on this recordation form and approve the same.

Edward C. Fry PE/LS 662
Signature of Surveyor Registration No.

STATE OF WYOMING,
Office of Clerk and Recorder,
County of Laramie

This "corner record" was filed for record on the 6th day of September, 1988, was noted on the cross-index plat and is assigned page No. 1370, in book No. 1264.

Janet C. Whitehead
County Official
Cross Index No. _____ T. _____ R. _____ Mer.
_____ T. _____ R. _____ Mer.
_____ T. _____ R. _____ Mer.
_____ T. _____ R. _____ Mer.
_____ T. _____ R. _____ Mer.
_____ T. _____ R. _____ Mer.

BOOK 1264

J-9

13-66

1370

64223.99 N.
598580.15 E.

64209.14 N.
601266.02 E.

64176.29 N.
603928.59 E.

61588.44 N.
598568.92 E.

8

61531.38 N.
603930.70 E.

58935.01 N.
598556.94 E.

58923.82 N.
601234.27 E.

58910.18 N.
603933.97 E.

City of Cheyenne - Ground Datum Coordinates
Section 8, T 13 N, R 66 W.